

PS 15 / PS 15SL / PS 20

The Electric Walkie Pallet Truck

INTRODUCTION

The PS- Series ensures with high performance through AC drive technology in intensive stacking operations with capacities up to 3300lbs(1500kg) / 4400lbs(2000kg) with 2- and 3-stage masts.

The optional available foldable platform is the best choice if the truck is used in larger warehouse with longer travelling distances.

ADVANTAGES

- High capacity of 3300lbs(1500kg) / 4400lbs(2000kg).
- Noblelift AC drive system.
- Electric steering (optional).
- Robust 2- and 3stage masts for lift heights up to 6000mm lift height.
- Foldable platform and protective arms (optional).



Key-switch, emergency switch and battery discharge indicator.



PS 15
Narrow type

PS 15SL
Straddle-lge type



Tiller
All operating elements on the CAN tiller are easy to reach.

The AC drive system gives high performance, ensures low maintenance costs and its high efficiency, saves energy for longer operations.

Optional straddle leg
Adjustable straddle leg design, suitable for diverse pallet sizes and more stability.



Standard battery
Long operating time through high capacity with 3 PZS battery.



Storage tray
The robust battery cover to with storage areas for utilities or packaging and stretch foil.

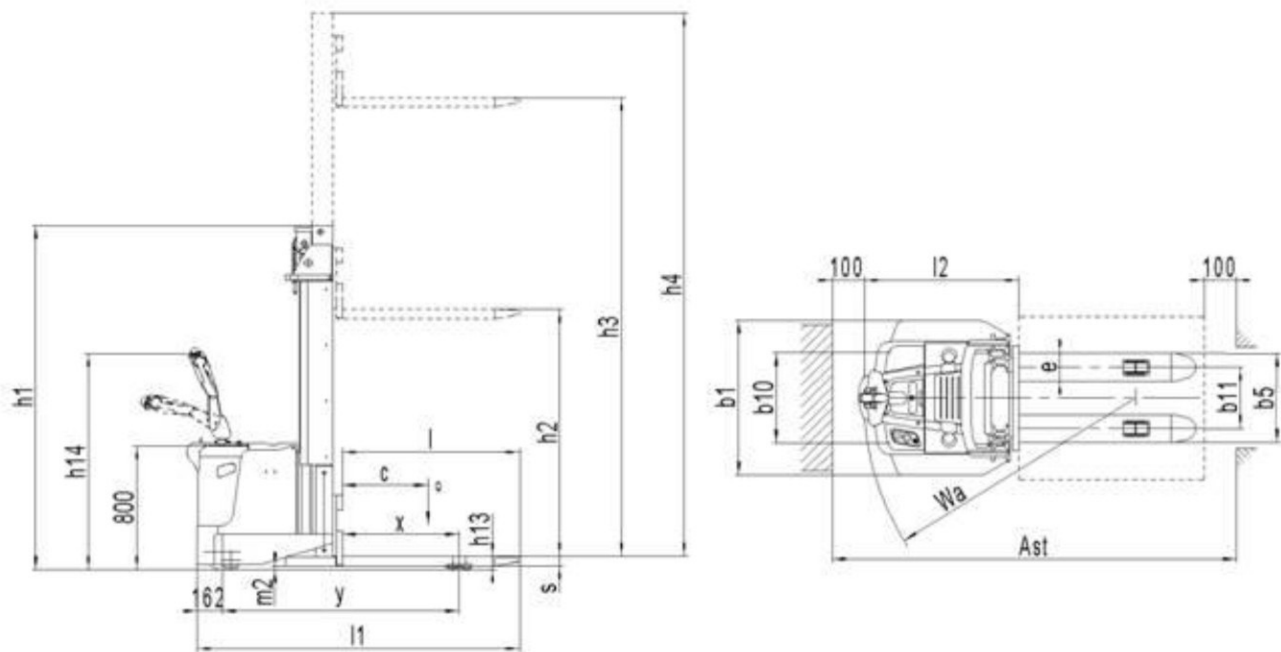
Electric steering (optional)
The electric steering makes the operating effortless. Maneuvering in narrow spaces becomes with the electric steering easiest.

Different mast versions
2- stage and 3-stage masts up to 236inch lift-height.



Optional foldable platform
Optional suspension foldable platform with sideways protective arms. The ergonomically designed foldable platform in combination with its sideways protective arms makes operations faster and safer.

Mast table PS 15				
Designation	Lowered mast height h1 (mm)	Free lift height h2 (mm)	Lift height h3 (mm)	Extended mast height h4 (mm)
PS 15				
Two-stage mast	1950	150	2900	3370
	2100	150	3200	3670
	2300	150	3600	4070
	2500	150	4000	4470
Two-stage mast FFL (Full-Free-Lift)	1950	1480	2900	3370
	2300	1830	3600	4070
Three-stage mast FFL (Full-Free-Lift)	1980	1420	4300	4865
	2080	1520	4600	5115
	2220	1660	5000	5520
	2475	1915	5500	6060
	2740	2156	6000	6600



PS 15 Type sheet for industrial truck acc. to VDI 2198 1KG=2.2LB 1INCH=25.4MM				
Distinguishing mark	1.2	Manufacturer's type designation		PS 15
	1.3	Power (battery ,diesel, petrol, gas, manual)		Battery
	1.4	Operator type		Pedestrian
	1.5	Load Capacity / rated load	Q (t)	1.5
	1.6	Load centre distance	C (mm)	600
	1.8	Load distance ,centre of drive axle to fork	X (mm)	765
	1.9	Wheelbase	Y(mm)	1519
Weight	2.1	Service weight	kg	1596
	2.2	Axle loading, laden front/rear	kg	1345/1663
	2.3	Axle loading, unladen front/rear	kg	955/553
Tyres, chassis	3.1	Tires		Polyurethane (PU)
	3.2	Tire size, front	Ø x w (mm)	Ø230×75
	3.3	Tire size, rear	Ø x w (mm)	Ø 80× 70
	3.4	Additional wheels(dimensions)	Ø x w (mm)	Ø124x60
	3.5	Wheels, number front/rear(x=driven wheels)		1x+2/4
	3.6	Tread, front	b10 (mm)	750
	3.7	Tread, rear	b11 (mm)	390
Dimensions	4.2	Lowered mast height	h1 (mm)	2220
	4.3	Free lift height	h2 (mm)	1660
	4.4	Lift	h3 (mm)	4915
	4.5	Extended mast height	h4 (mm)	5520
	4.9	Height of tiller in drive position min./ max.	h14 (mm)	1370/945
	4.15	Height, lowered	h13 (mm)	85
	4.19	Overall length	l1 (mm)	2180
	4.20	Length to face of forks	l2 (mm)	1030
	4.21	Overall width	b1 (mm)	1000
	4.22	Fork dimensions	s/e/l (mm)	60/180/1150
	4.25	Distance between fork- arms	b5 (mm)	570
	4.32	Ground clearance, centre of wheelbase	m2 (mm)	25
	4.33	Aisle width for pallets 1000X1200 lengthways	Ast (mm)	2645
	4.34	Aisle width for pallets 800X1200 lengthways	Ast (mm)	2592
	4.35	Turning radius	Wa (mm)	1806
Performance data	5.1	Travel speed, laden/unladen	Km/h	6.0/6.0
	5.2	Lift speed, laden/ unladen	m/s	0.141/0.212
	5.3	Lowering speed, laden/ unladen	m/s	0.227/0.178
	5.8	Max. gradeability performance, laden/ unladen	%	6/12
	5.10	Service brake		Electromagnetic
Electric- engine	6.1	Drive motor rating S2 60min	kW	1.3
	6.2	Lift motor rating at S3 15%	kW	3.0
	6.3	Battery acc. to DIN 43531/35/36 A, B, C, no		B,3PzS
	6.4	Battery voltage, nominal capacity K5	V/Ah	24/ 350
	6.5	Battery weight	kg	288
	6.6	Energy consumption acc. to VDI cycle	kWh/h	2.1
Additional data	8.1	Type of drive control		AC- Speed Control
	8.4	Sound level at driver's ear according to EN 12053	dB(A)	70